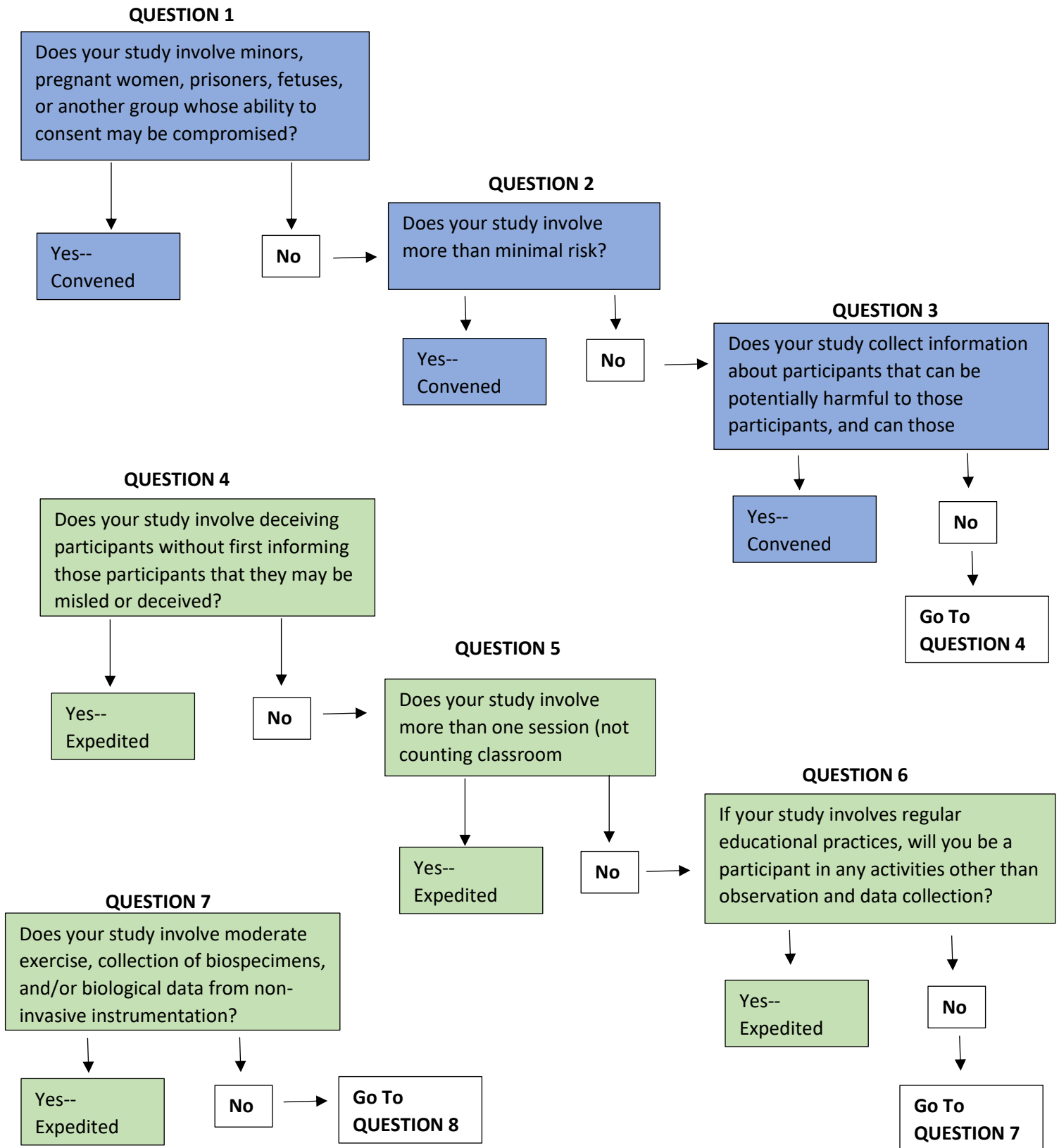


What Level of IRB Review Do You Need? The following questions are ordered in order to successfully determine what type of IRB proposal you should submit based on your answers.

Read EACH question in the order it appears and follow the YES and NO arrows to determine if you need to go to the next question, or if your answer determines your type of proposal.

*Please note, this chart is meant to help you determine what is the minimum level of review necessary for your study. The IRB may determine that your study needs to be reviewed at a higher level. If this is the case, reasons for such a decision will be provided to you.



QUESTION 8

Do you plan to make generalizations from your study to a group or population?

Yes--
Exempt

No

QUESTION 9

Does your study qualify for exempt status under one of the 8 conditions listed in 45 CFR 46?

Yes--
Exempt

No

If you got this far without answering YES, please start over with Question 1